



Example Workflows for Federal Funding Administration at US Institutions

Public Version

Sarah Lippincott

Invest in Open Infrastructure,
<https://orcid.org/0000-0002-5700-5844>

Katherine Skinner

Invest in Open Infrastructure,
<https://orcid.org/0000-0003-0139-7524>

Jennifer Kemp

Invest in Open Infrastructure,
<https://orcid.org/0000-0003-4086-3196>

Lauren Collister

Invest in Open Infrastructure,
<https://orcid.org/0000-0001-5767-8486>

Gail Steinhart

Invest in Open Infrastructure,
<https://orcid.org/0000-0002-2441-1651>

September 2025

Introduction

As part of our project, “Investigating ‘reasonable costs’ to achieve public access to federally funded research and scientific data”, supported by the National Science Foundation under Grant No. 2330827, Invest in Open Infrastructure investigated how institutions were responding to new public access policies associated with United States federal funding. This document includes sample workflows from 23 institutions in the United States, gathered through surveys and interviews. These workflows are simplified versions of actual practices, intended to capture points where public access considerations are addressed. These workflows represent a snapshot of the institution’s processes as of January 2025.

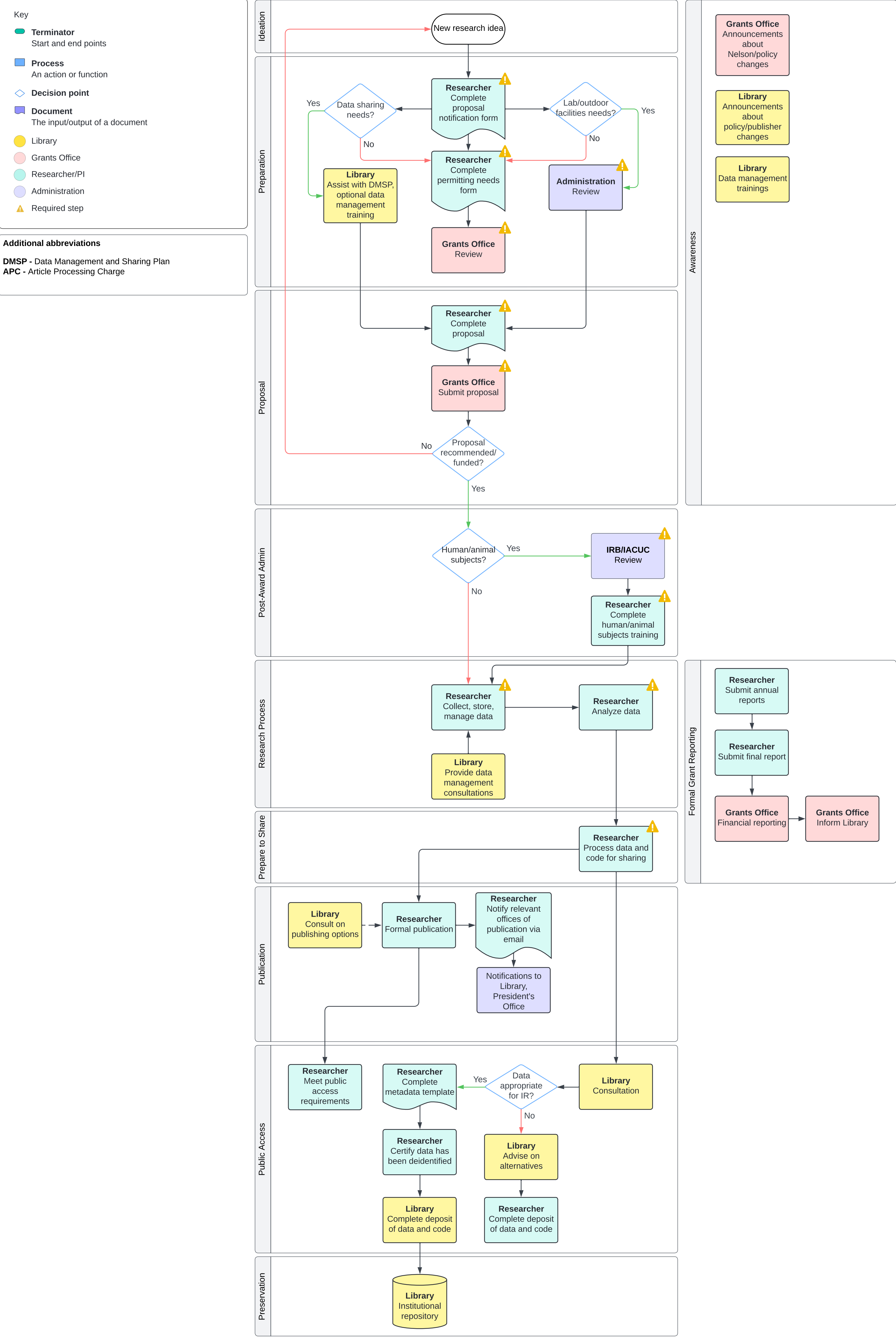
This publication was created as part of the project, “Investigating ‘reasonable costs’ to achieve public access to federally funded research and scientific data”, supported by the National Science Foundation under Grant No. 2330827. For more information and additional outputs of this project, please visit: <https://investinopen.org/data-room/reasonable-costs/>

Suggested Citation:

Lippincott, Sarah; Skinner, Katherine; Collister, Lauren; Kemp, Jennifer; and Steinhart, Gail. (2025). Example Workflows for Federal Funding Administration at US Institutions. *Invest in Open Infrastructure*. DOI: 10.5281/zenodo.15611424

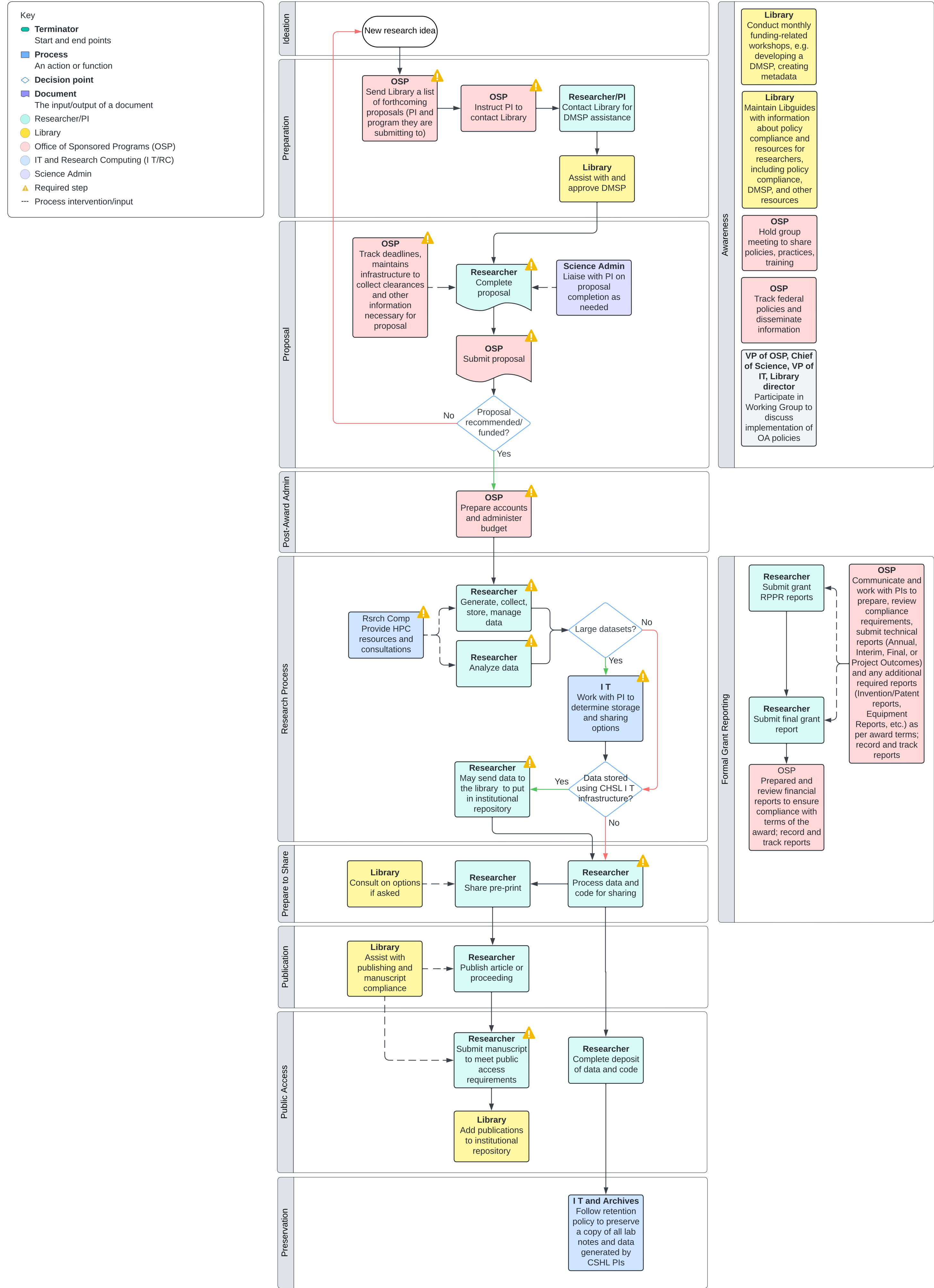
Cary Institute federal research funding workflow

Simplified workflow, current as of January 2025



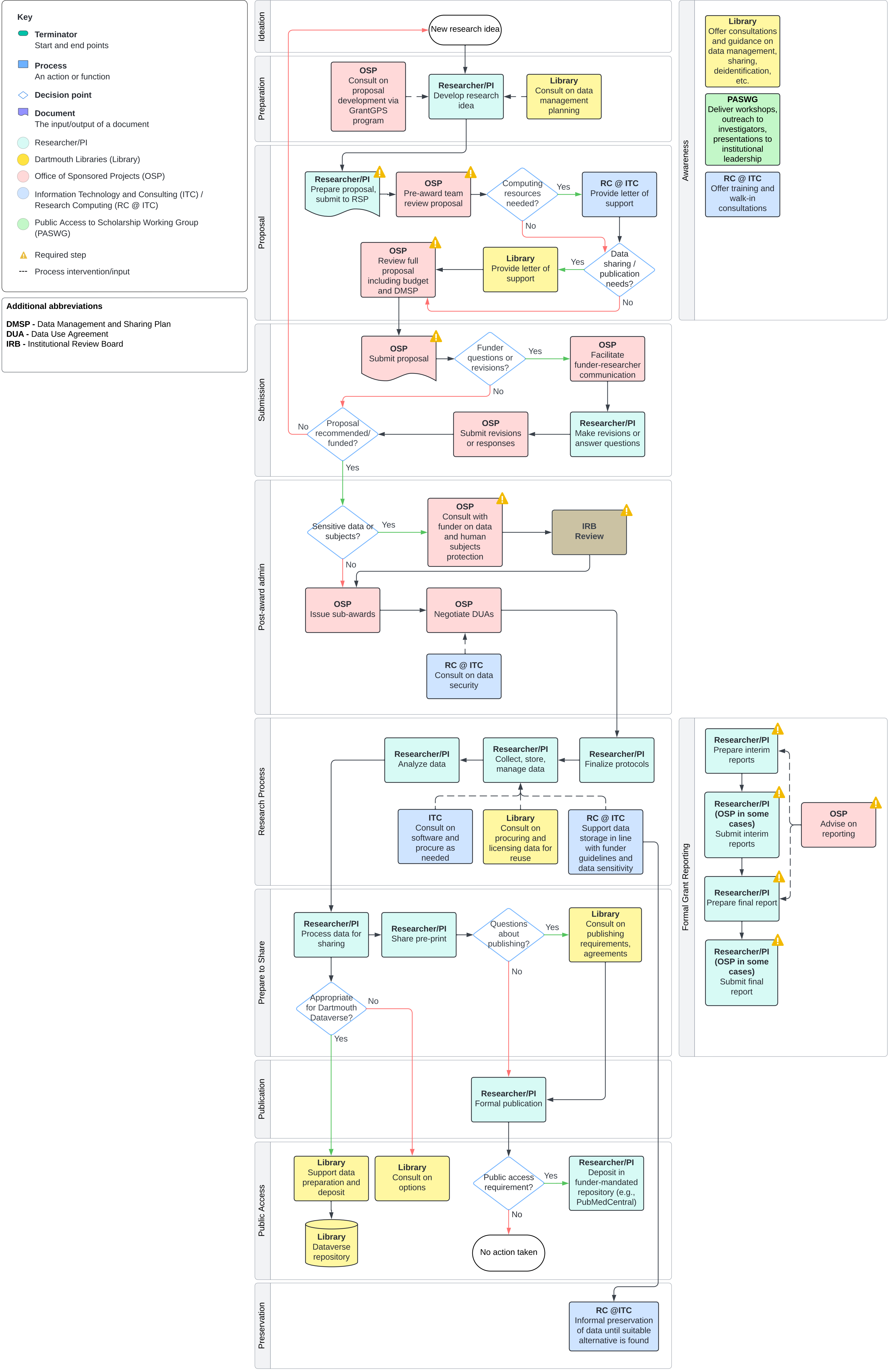
Cold Spring Harbor Laboratory federal research funding workflow

Simplified workflow, current as of January 2025



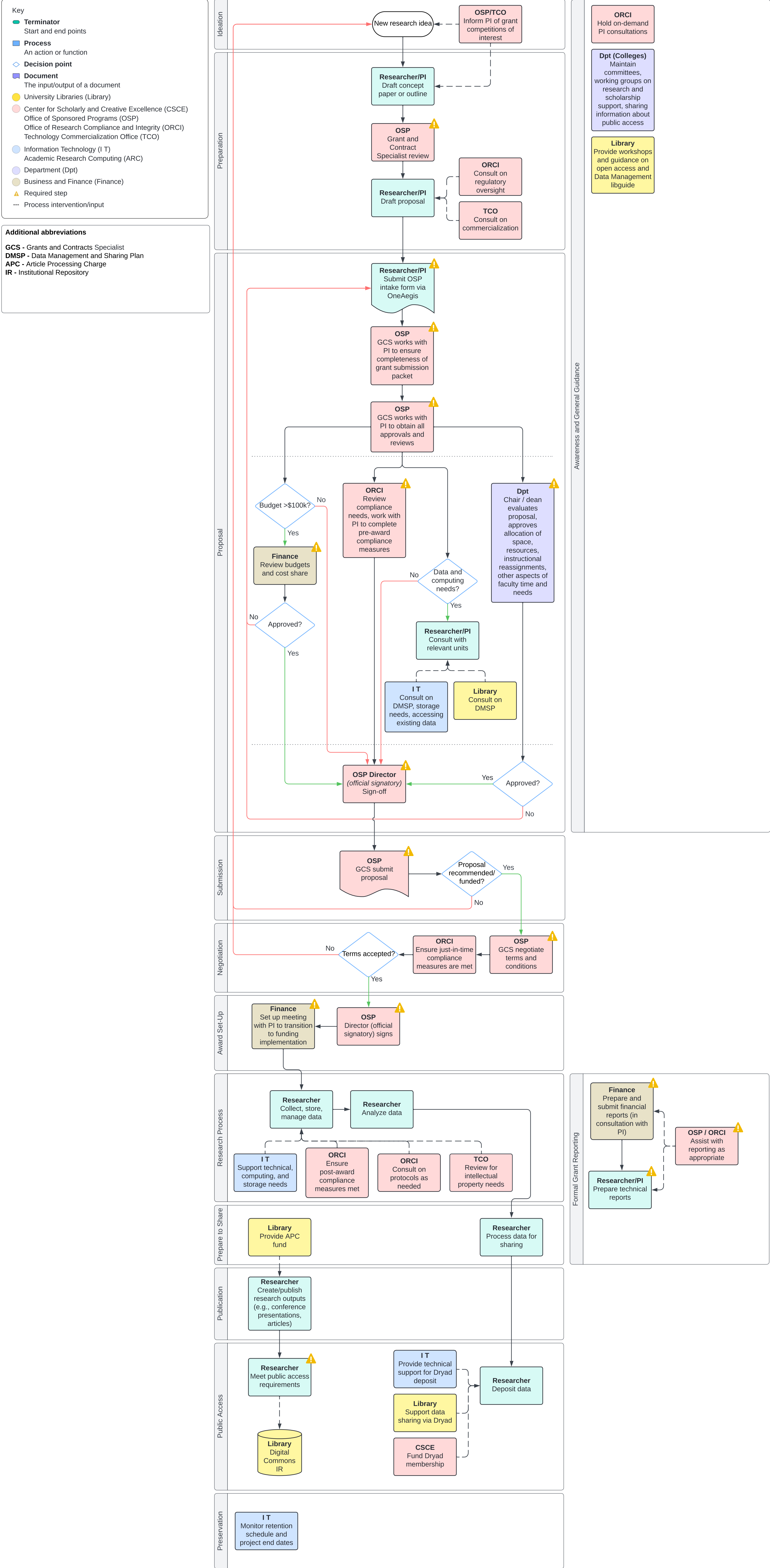
Dartmouth College federal research funding workflow

Simplified workflow, current as of January 2025



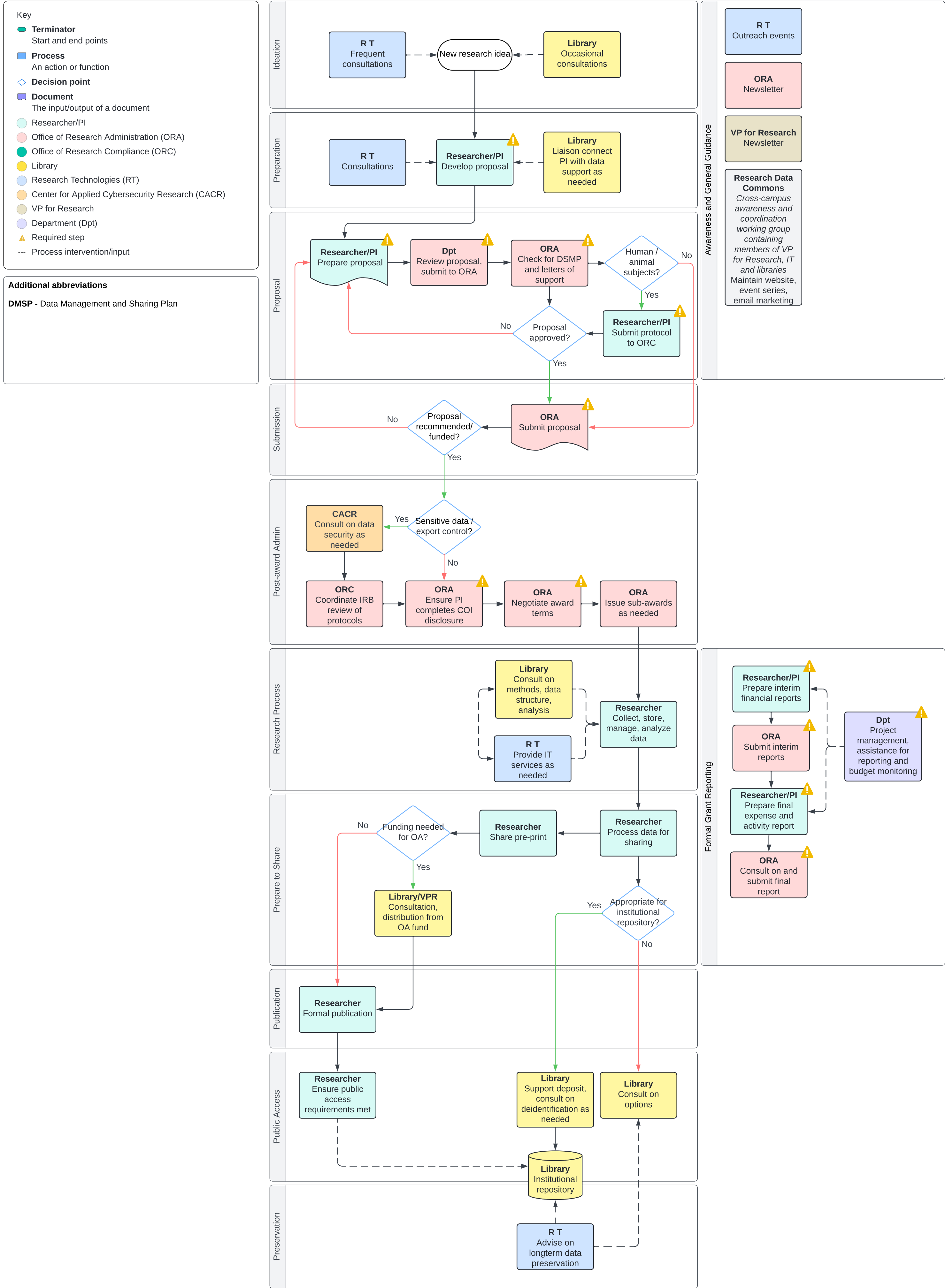
Grand Valley State University federal research funding workflow

Simplified workflow, current as of January 2025



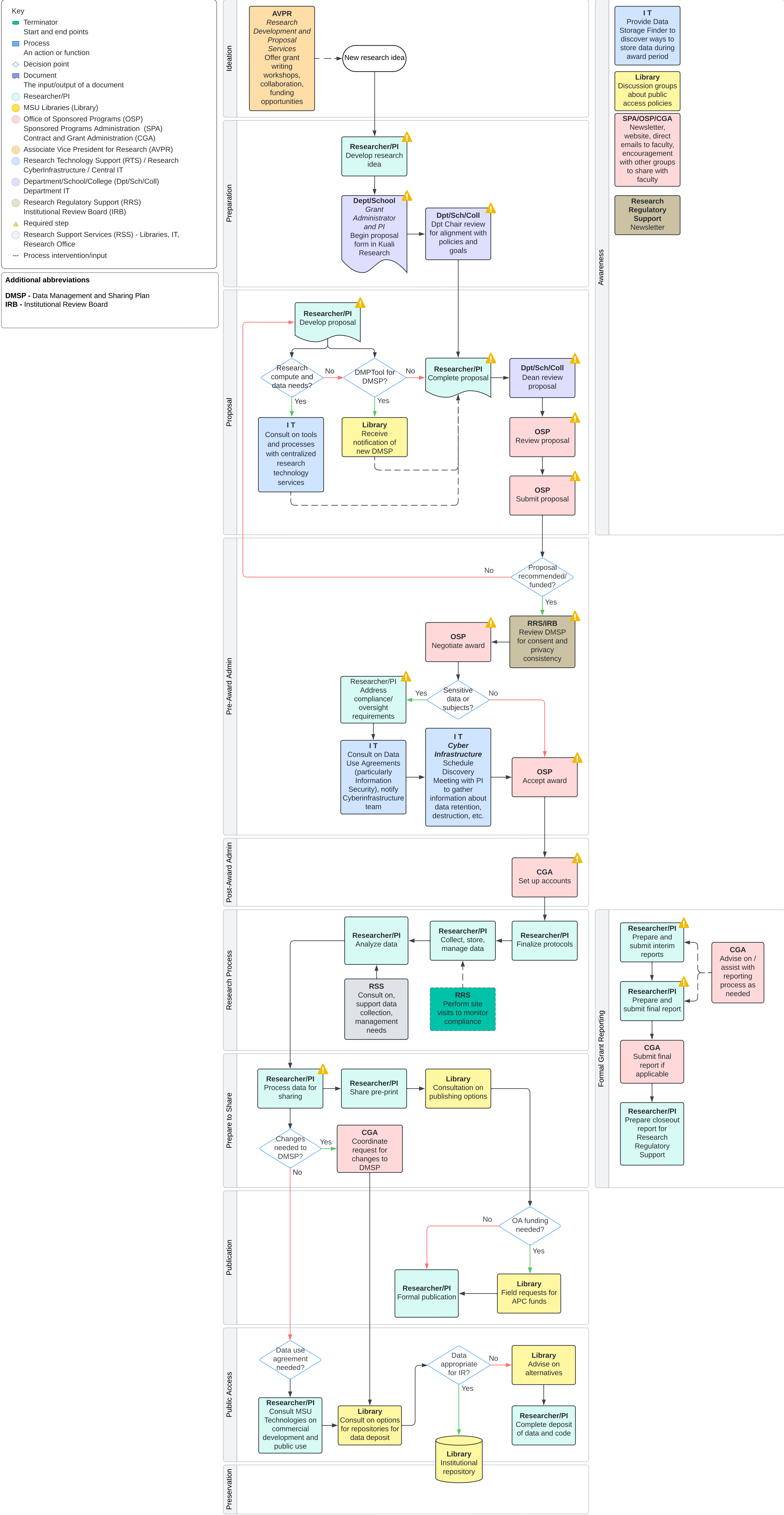
Indiana University Bloomington federal research funding workflow

Simplified workflow, current as of January 2025



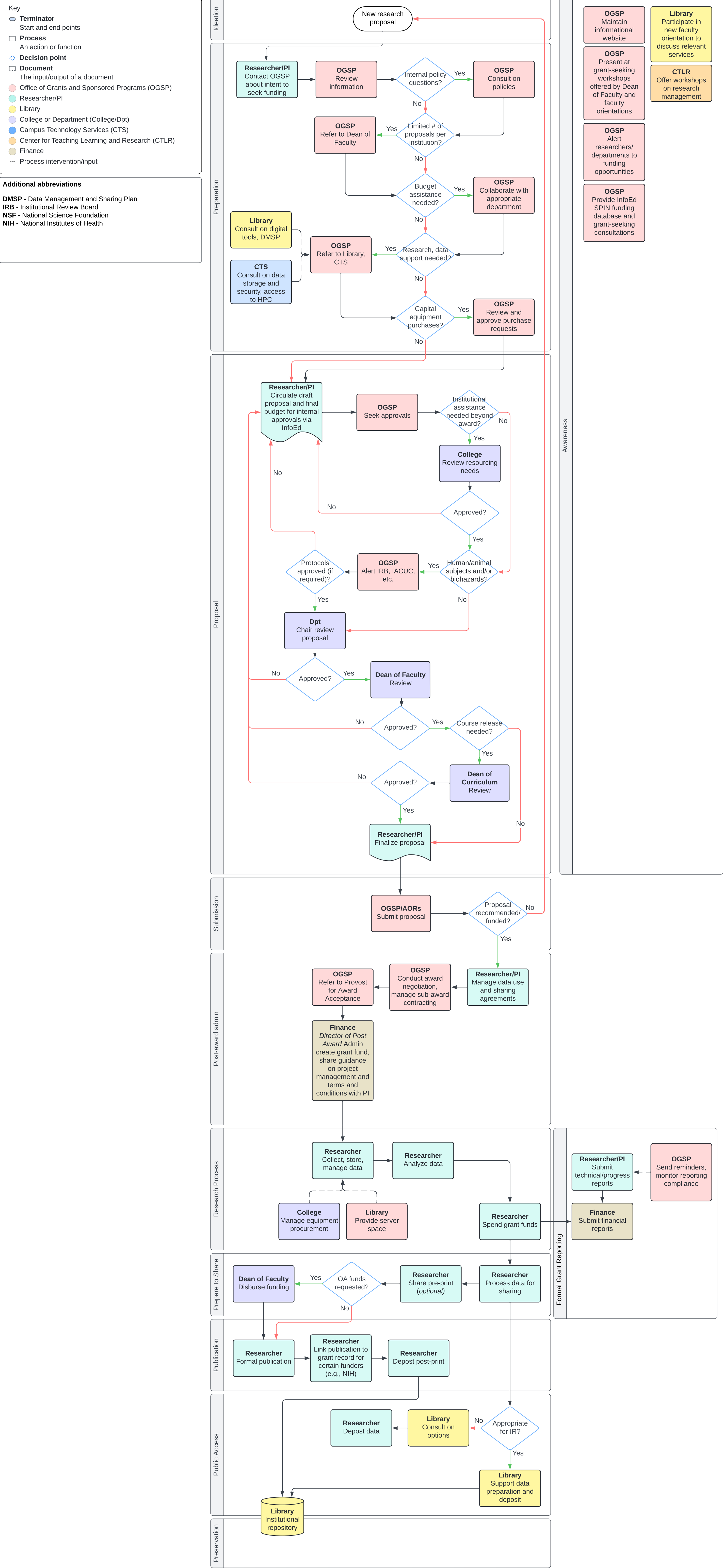
Michigan State University federal research funding workflow

Simplified workflow, current as of January 2025



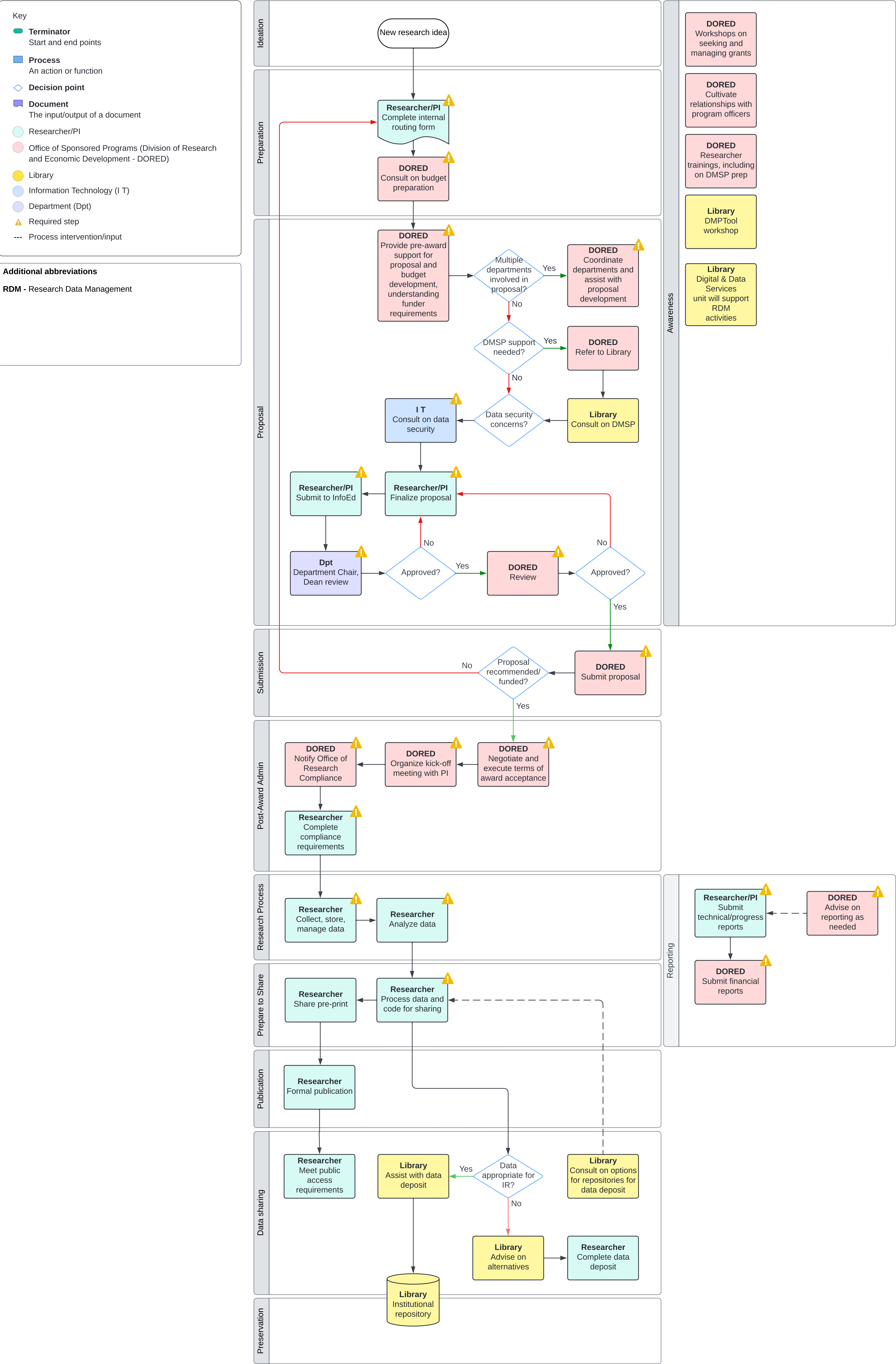
Middlebury College federal research funding workflow

Simplified workflow, current as of January 2025



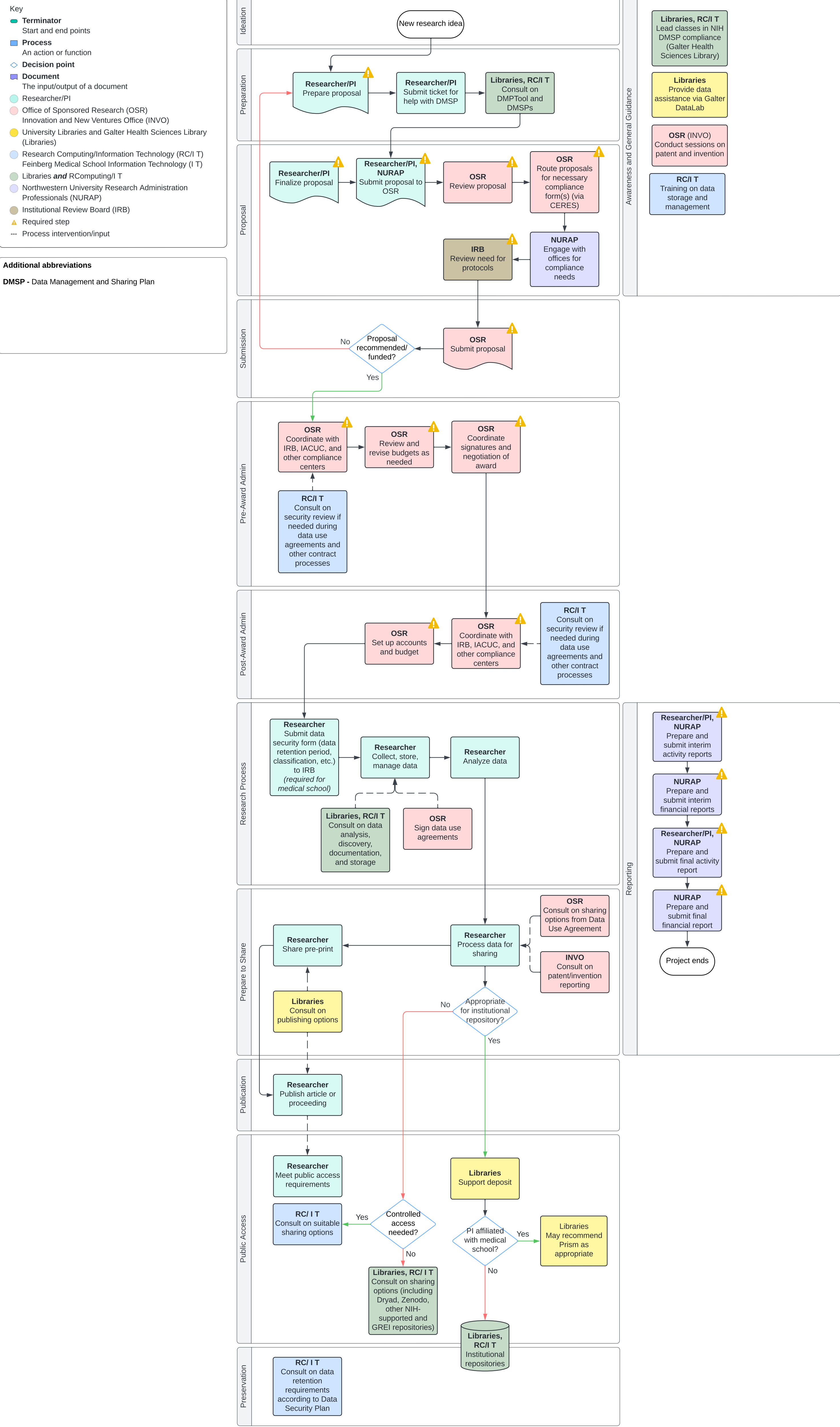
North Carolina Agricultural & Technical State University federal research funding workflow

Simplified workflow, current as of January 2025



Northwestern University federal research funding workflow

Simplified workflow, current as of January 2025



Pennsylvania State University federal research funding workflow

Simplified workflow, current as of January 2025

Key

Terminator

Start and end points

Process

An action or function

Decision point

Document

The input/output of a document

University Libraries

Central Processing Office (CPO)

Senior Vice President for Research (SVPR)

Strategic Interdisciplinary Research Office (SIRO)

Institute for Computational and Data Sciences (ICDS)

Data Commons

Colleges/Centers (Coll/Ctr)

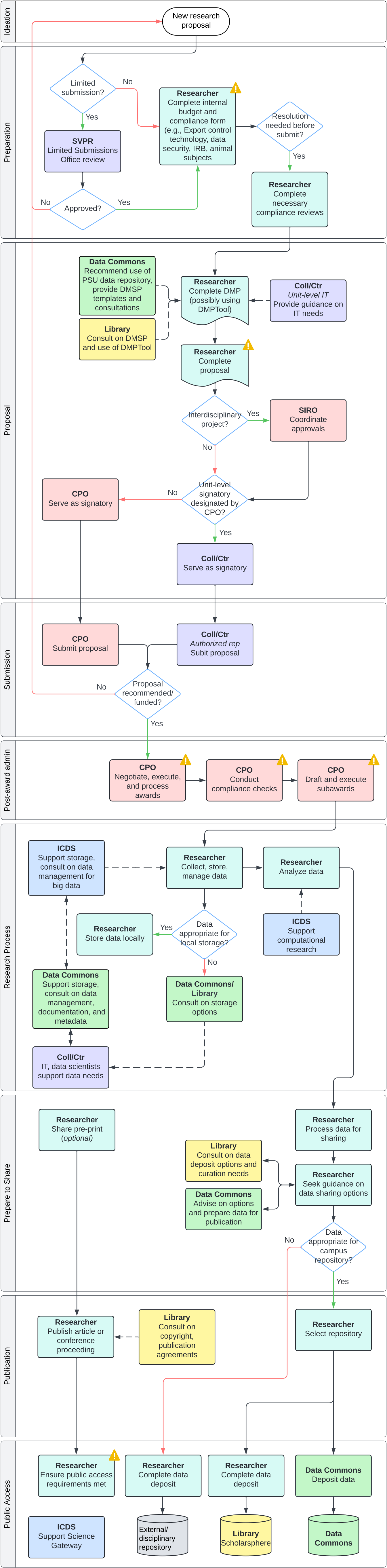
Required step

Process intervention/input

Additional abbreviations

DMSP - Data Management and Sharing Plan

IR - Institutional Repository



Library Offer trainings

Library Develop LibGuides

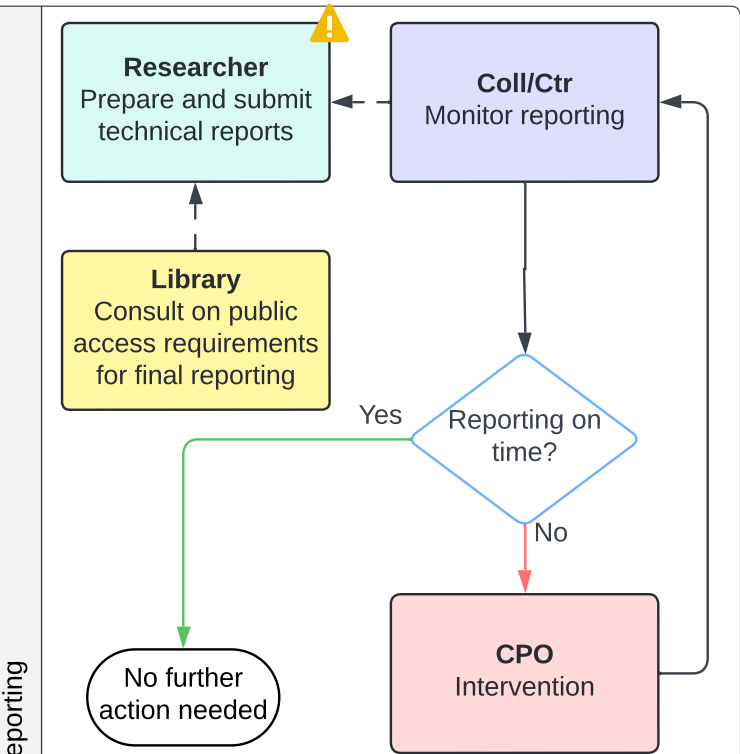
SVPR Communicate significant changes

SVPR Communicate significant changes

Administrative Council on Research Share information about policies and requirements, host faculty list servs

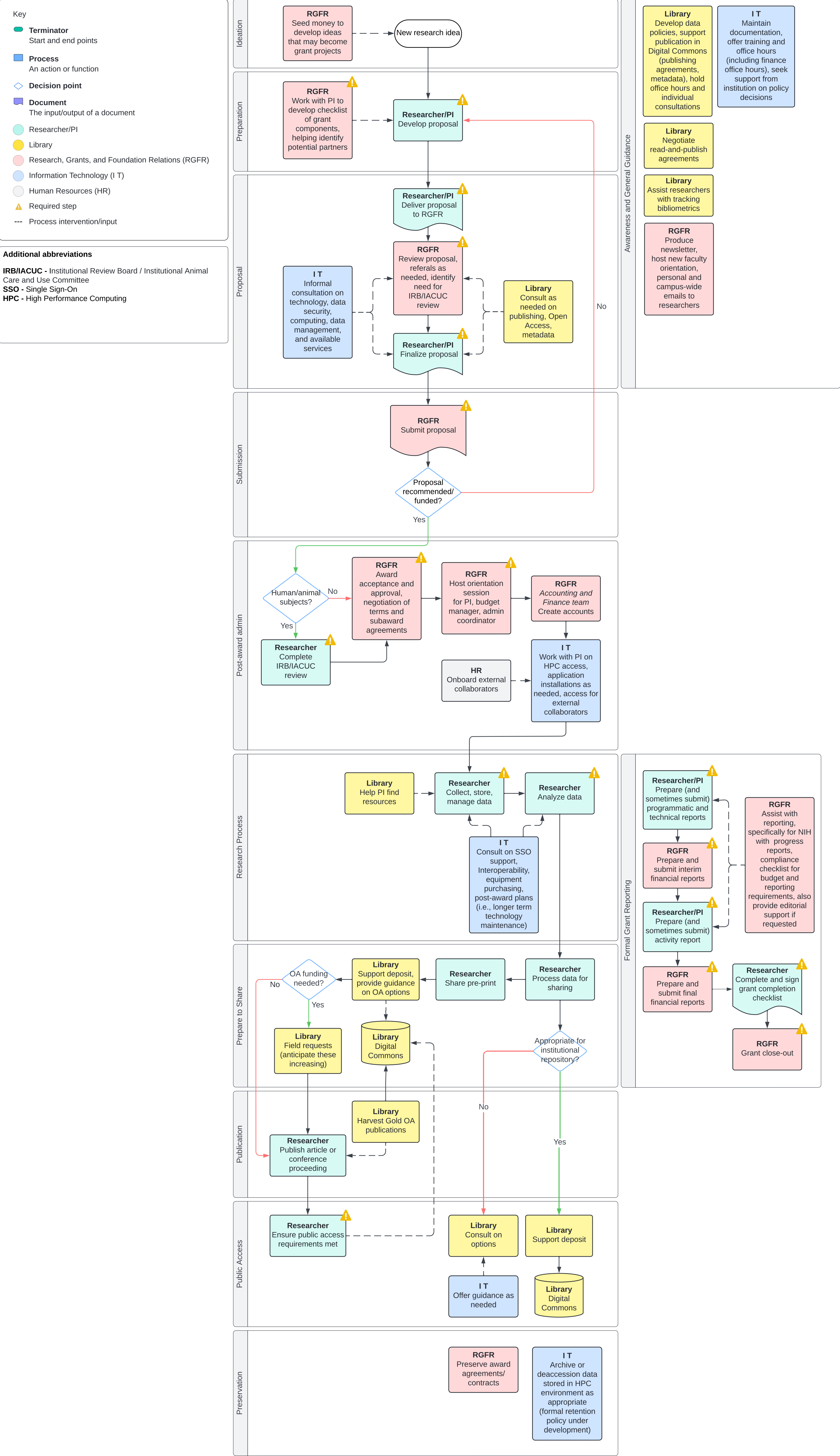
Office of Research Protections Education and Training Office Provide ongoing training on compliance and other topics

Data Commons Offer trainings outreach, education



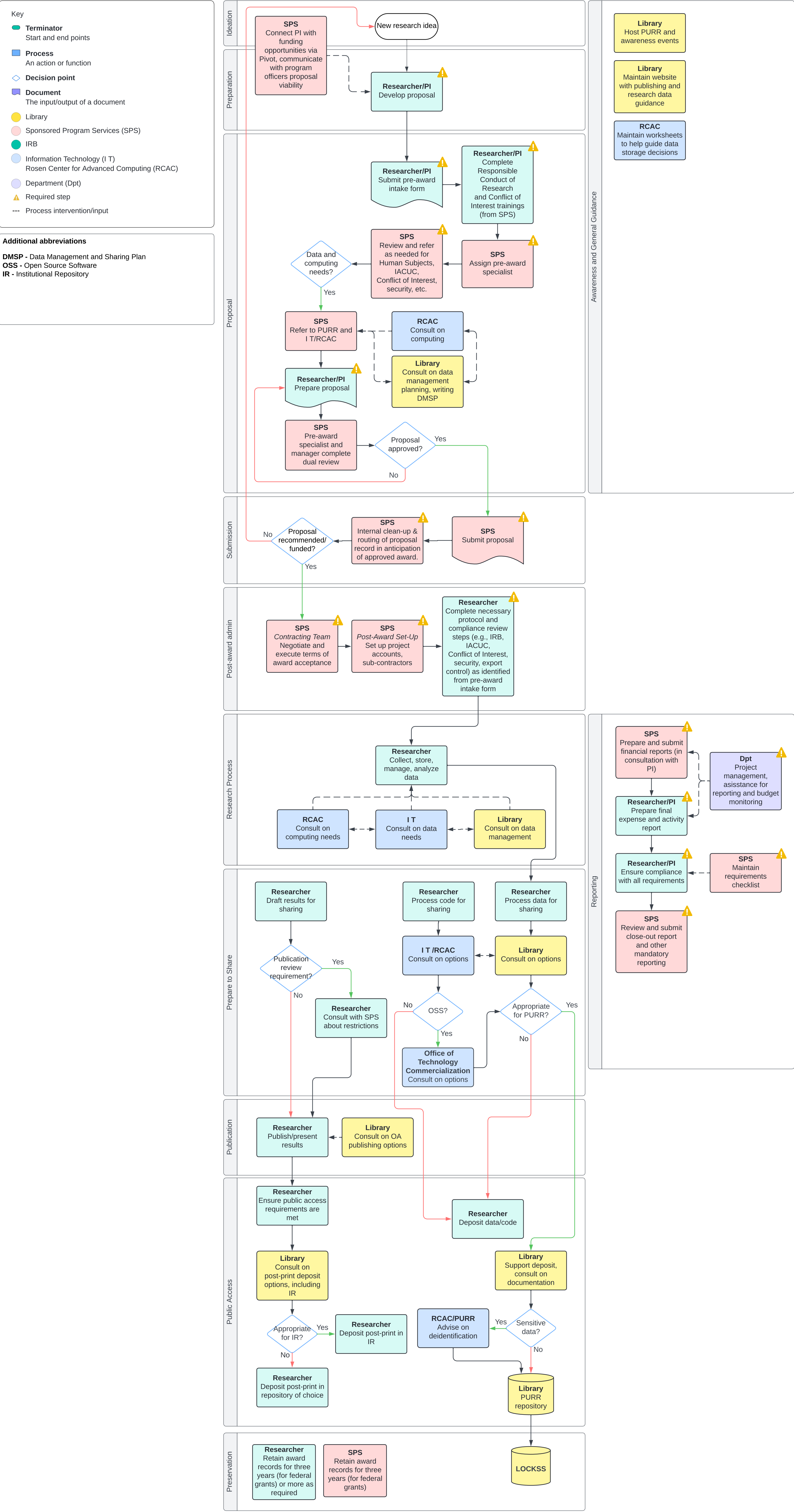
Pepperdine University federal research funding workflow

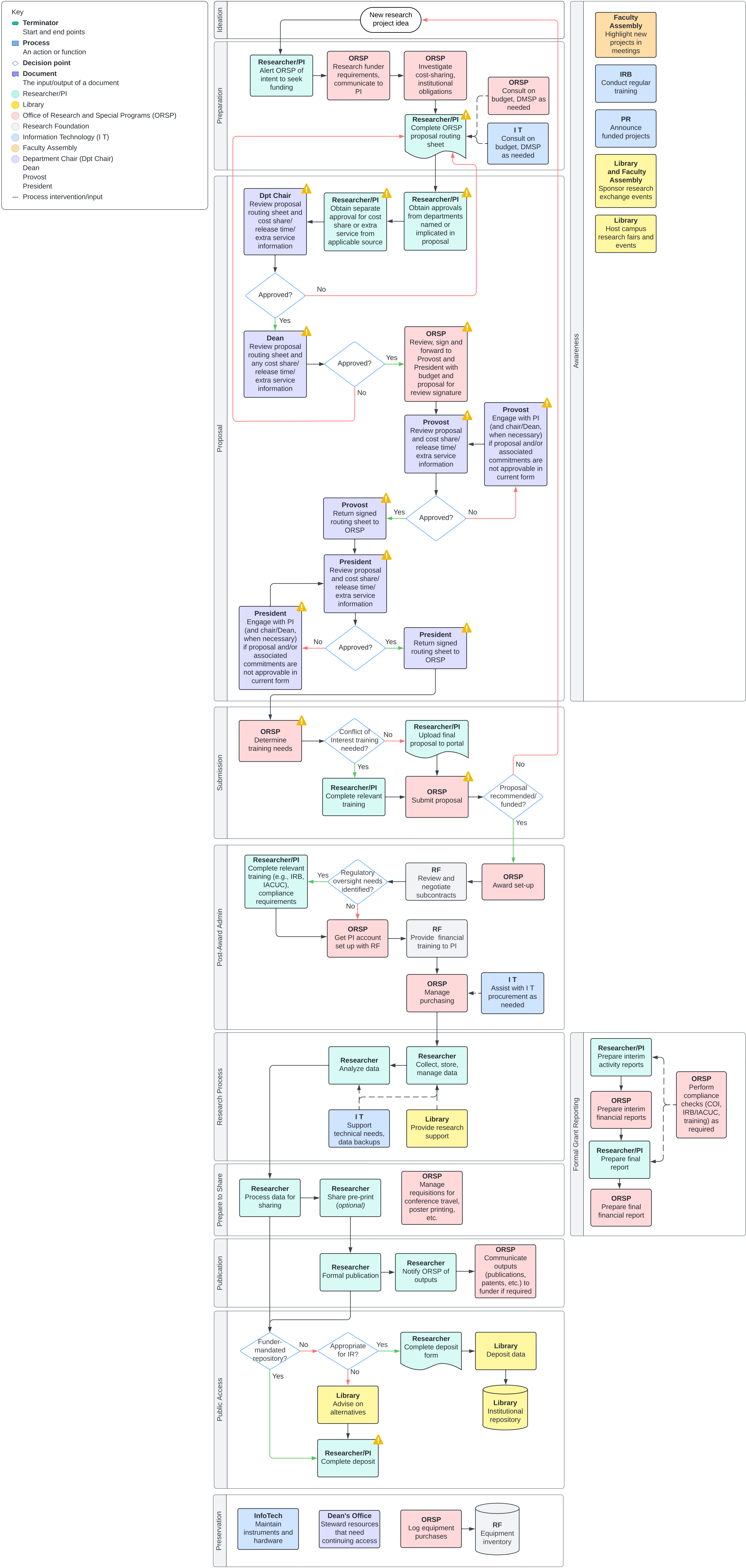
Simplified workflow, current as of January 2025



Purdue University federal research funding workflow

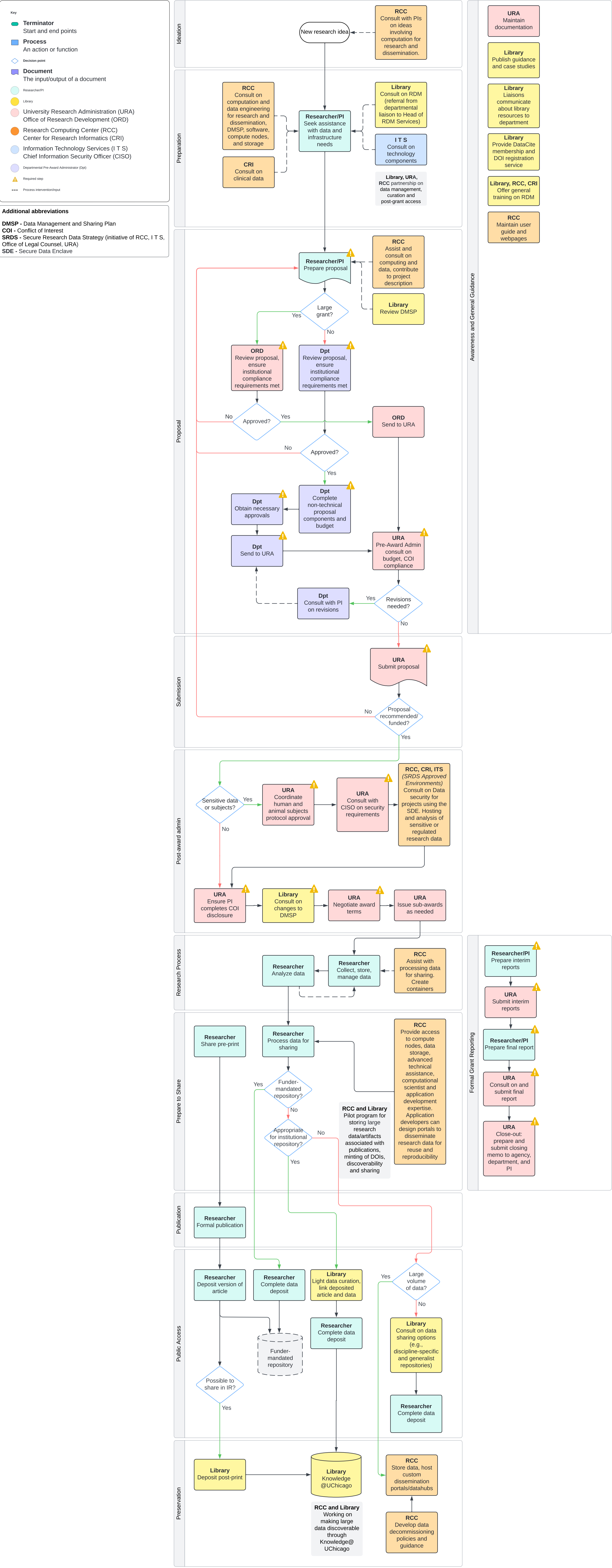
Simplified workflow, current as of January 2025





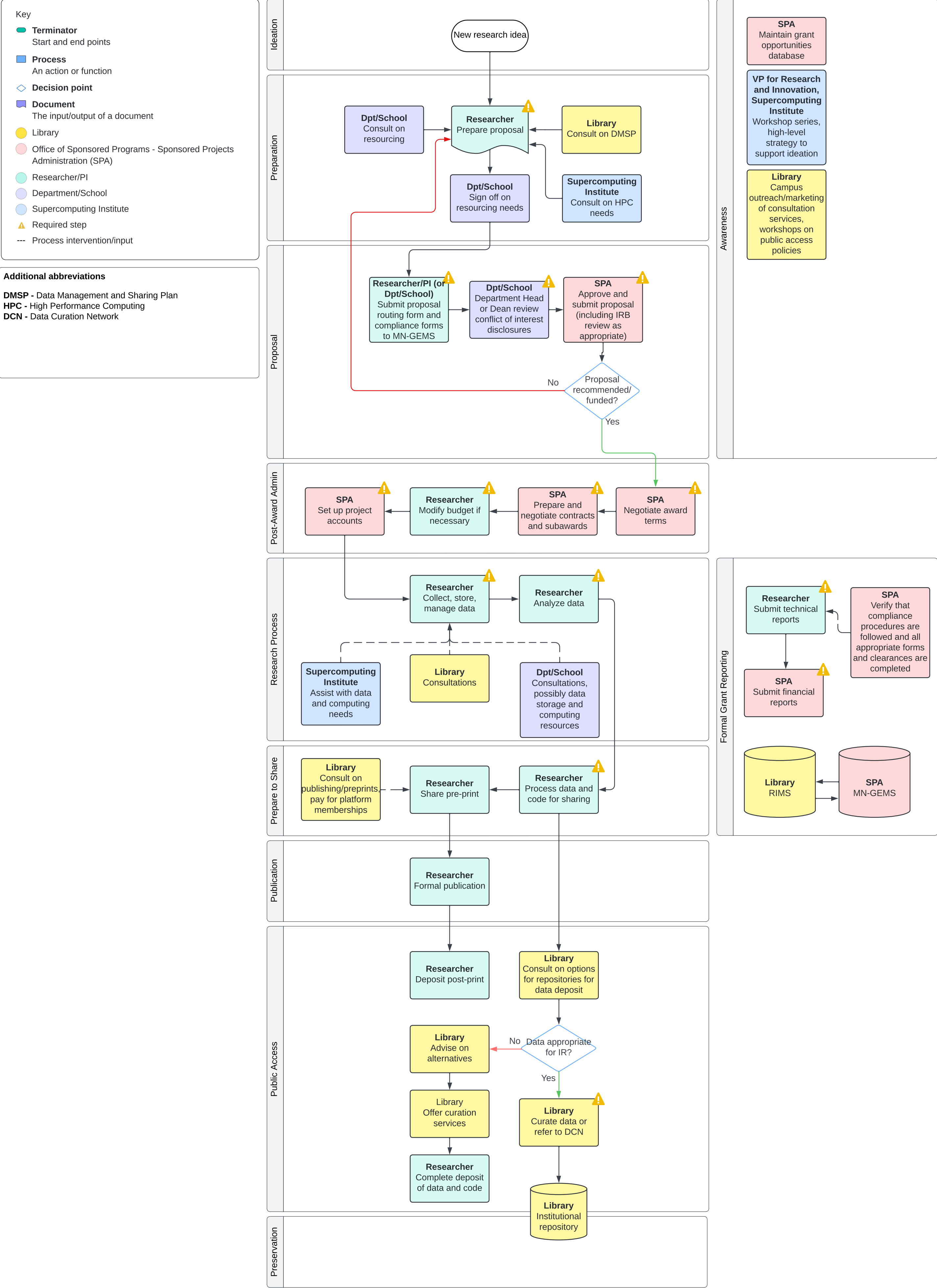
University of Chicago federal research funding workflow

Simplified workflow, current as of January 2025



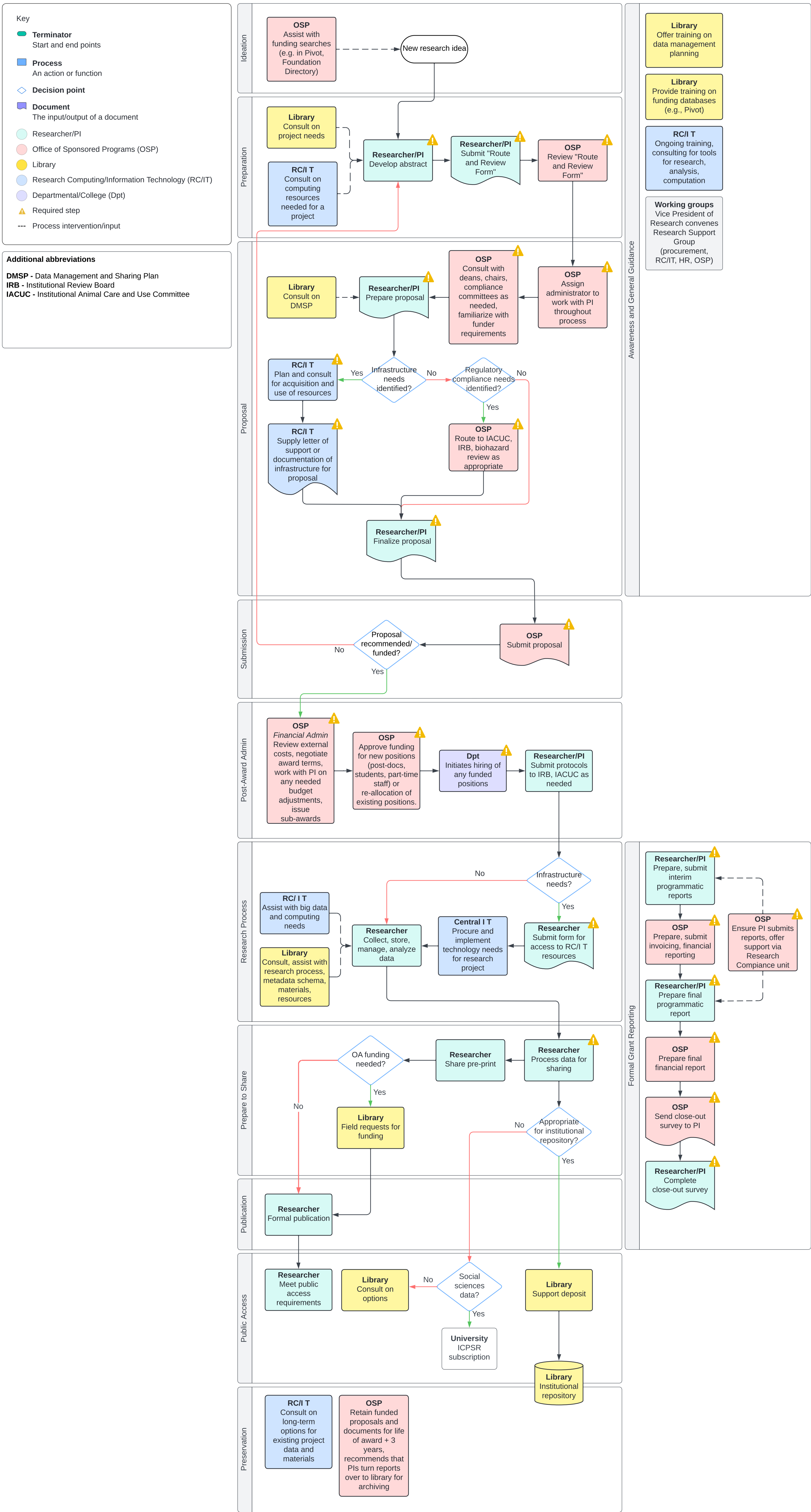
University of Minnesota federal research funding workflow

Simplified workflow, current as of January 2025



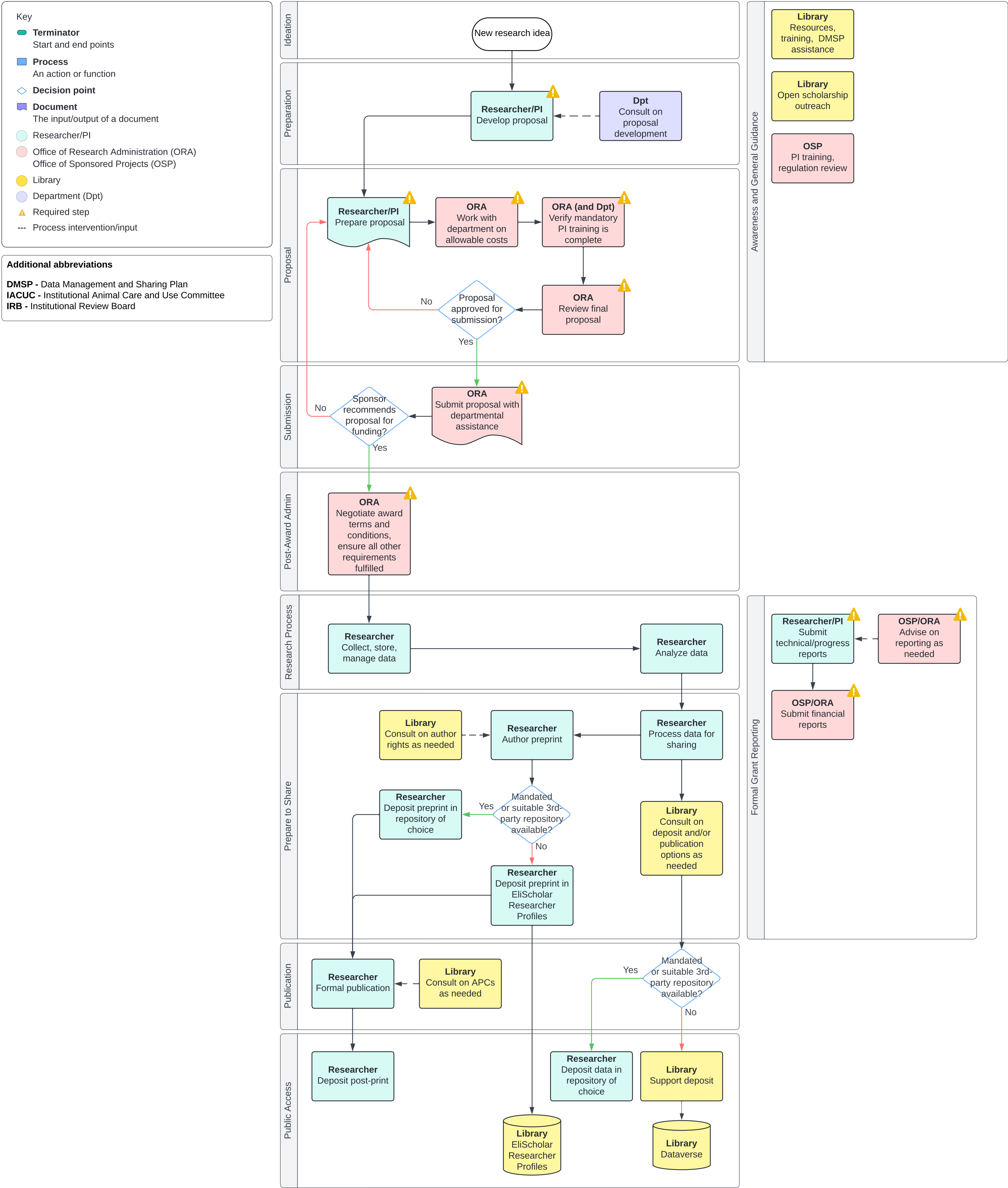
College of William & Mary federal research funding workflow

Simplified workflow, current as of January 2025



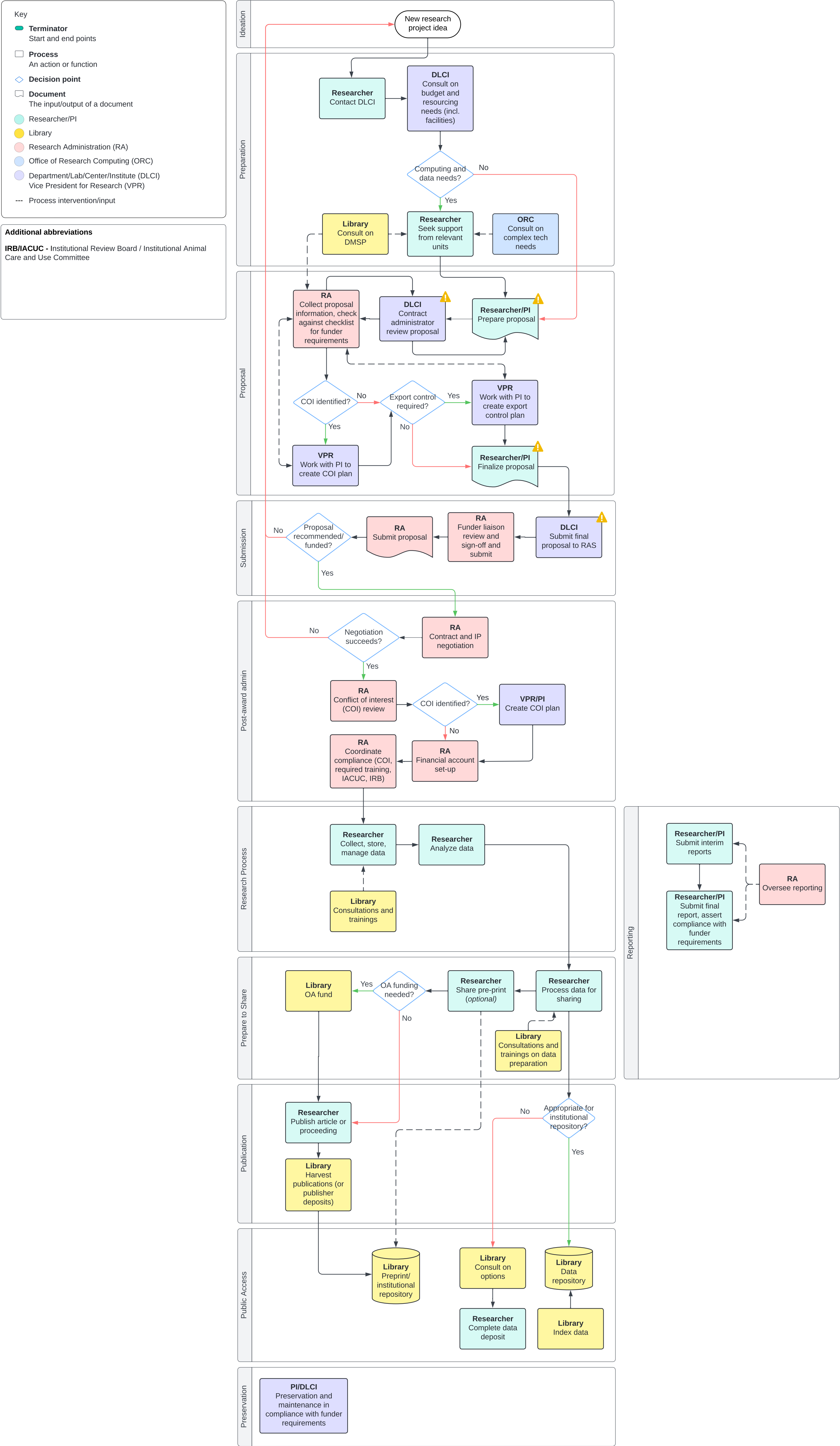
Yale University federal research funding workflow

Simplified workflow, current as of January 2025



Institution A federal research funding workflow

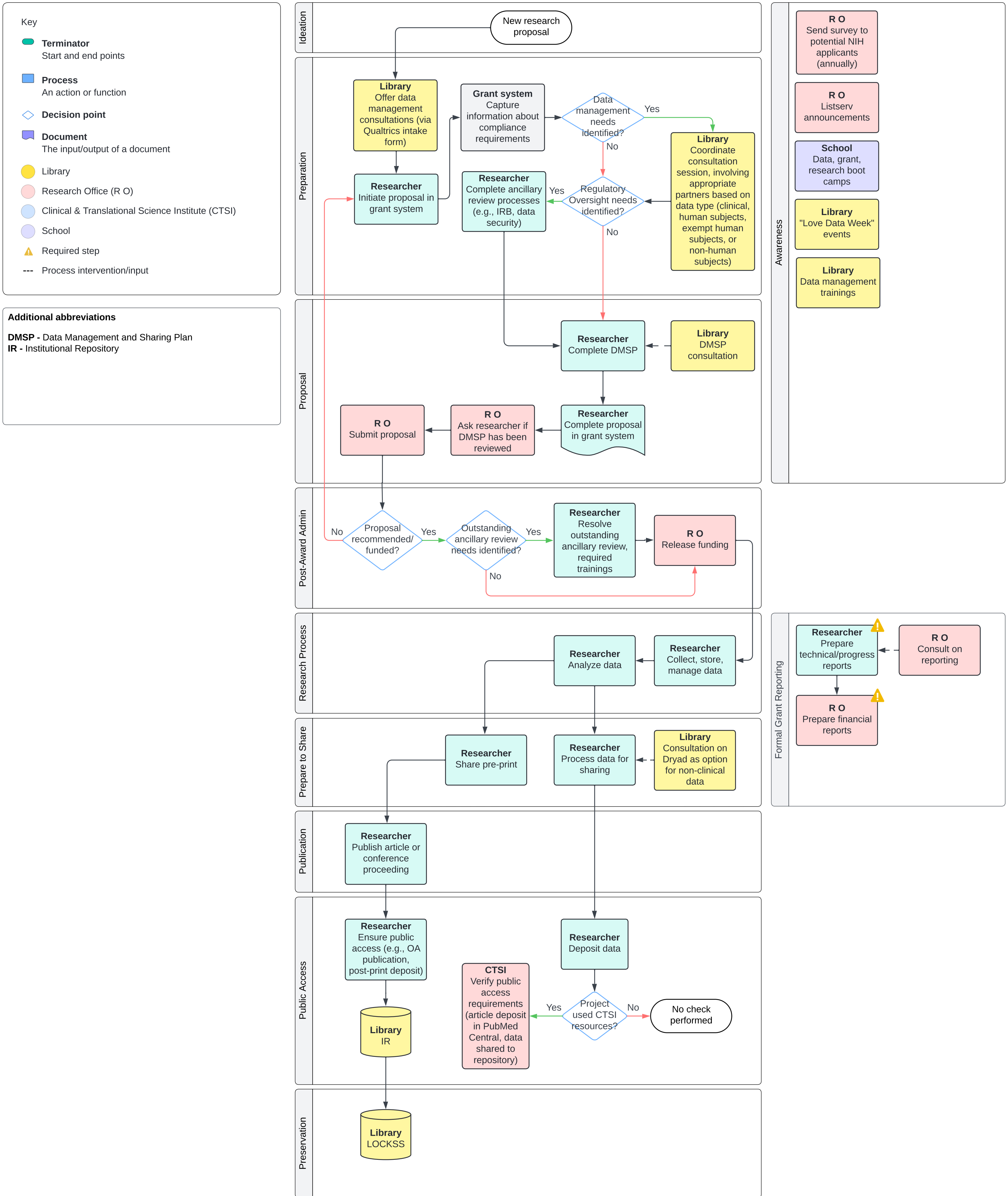
Simplified workflow, current as of January 2025



Investigating reasonable costs to achieve public access to federally funded research and scientific data

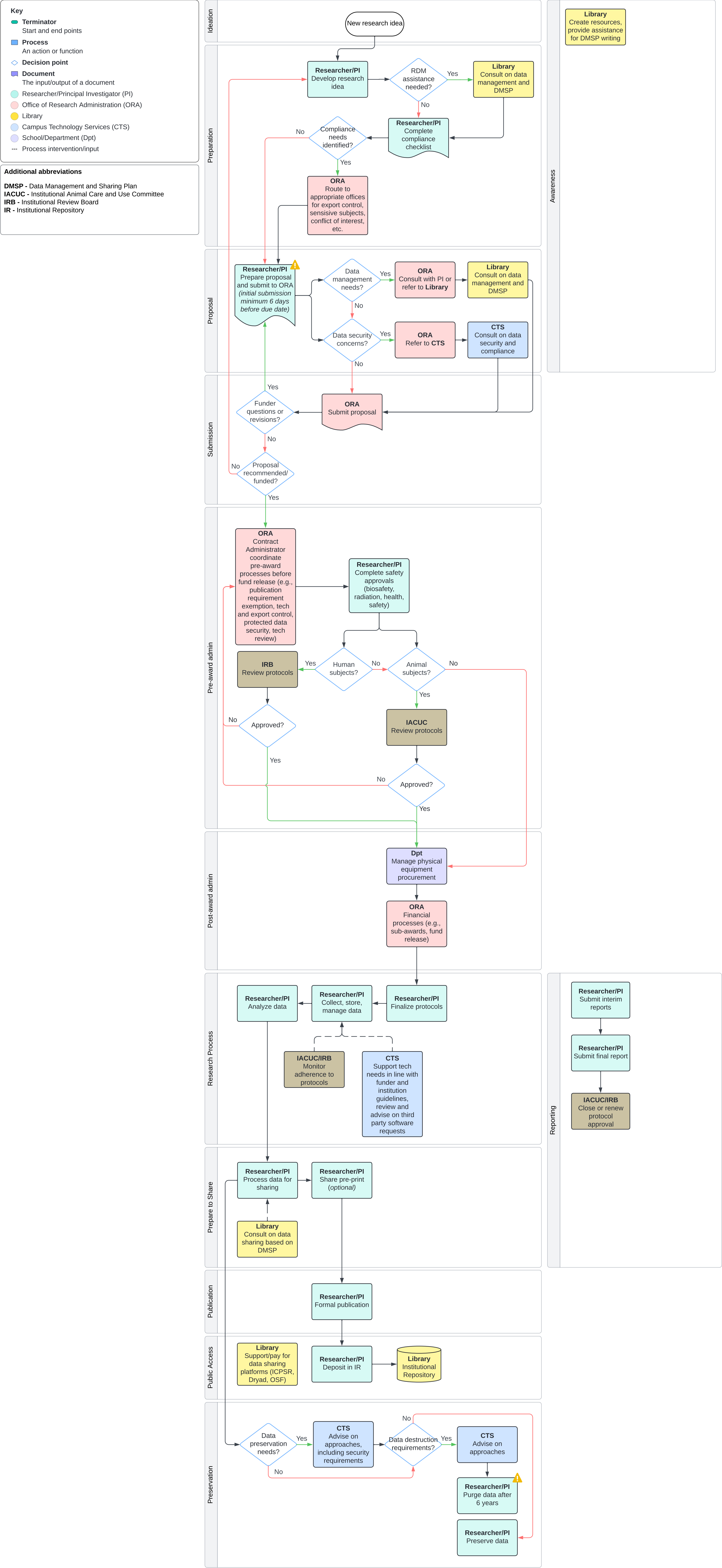
Institution B federal research funding workflow

Simplified workflow, current as of January 2025



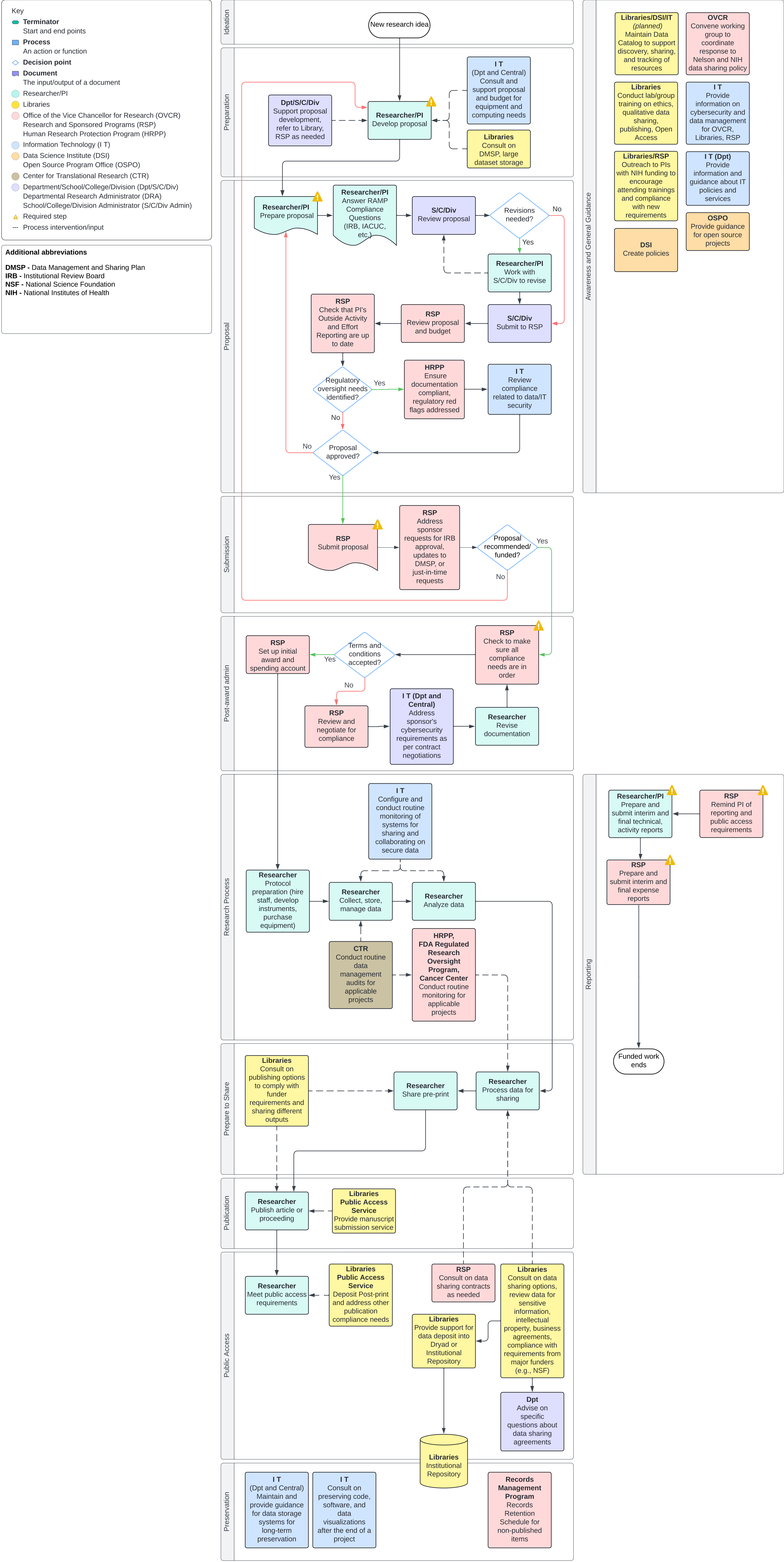
Institution C federal research funding workflow

Simplified workflow, current as of January 2025



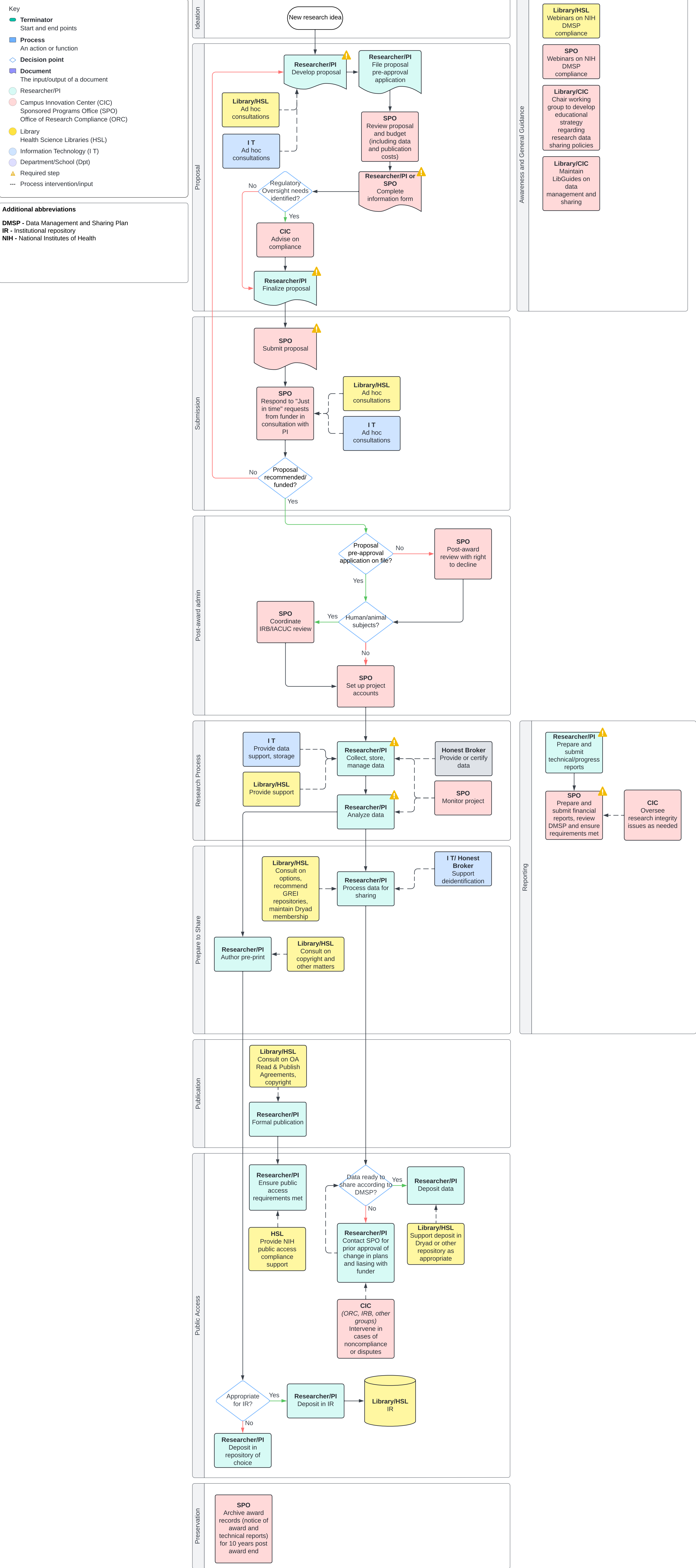
Institution D federal research funding workflow

Simplified workflow, current as of January 2025



Institution E federal research funding workflow

Simplified workflow, current as of January 2025



Institution F federal research funding workflow

Simplified workflow, current as of January 2025

